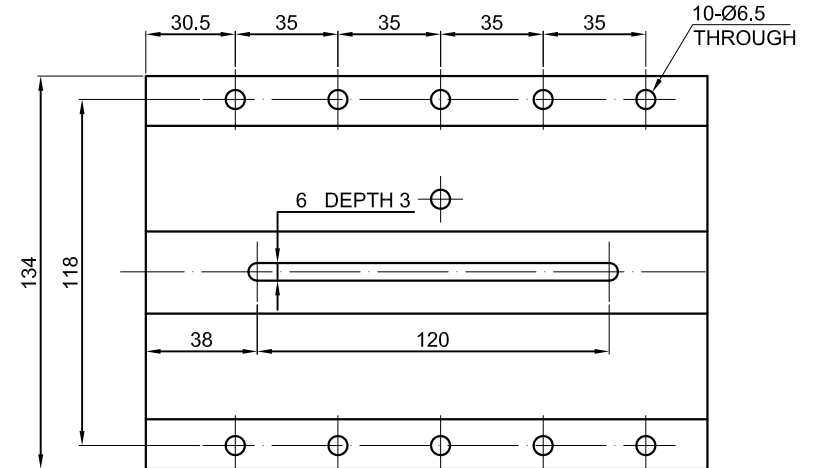


↑  
B

B VIEW BOTTOM OF SHELL



SPECIFICATION	VALUE
POWER (Kw)	3.5
VOLTAGE (VAC)	380
RATED CURRENT (A)	7
MAXIMUM SPEED (RPM)	18000
FREQUENCY (Hz)	300
NUT MODEL	ER20
COLLET (mm)	Ø6、Ø6.35
RUNOUT OFF (mm)	LESS THAN 0.005
BEARINGS	2x7007(P4) + 2x7002C(P4)
COOLING	AIR COOLED
MATERIAL	STAINLESS STEEL
LUBRICATION	GREASE
WEIGHT (Kg) [lb]	8.1 [17.86]



mm	APVD	5.24.2019
UNIT	CHKD	
3:1	DRN	
SCALE	SIGNATURE	DATE

**SPINDLE MOTOR**

**GDZ105×102L-3.5C4**