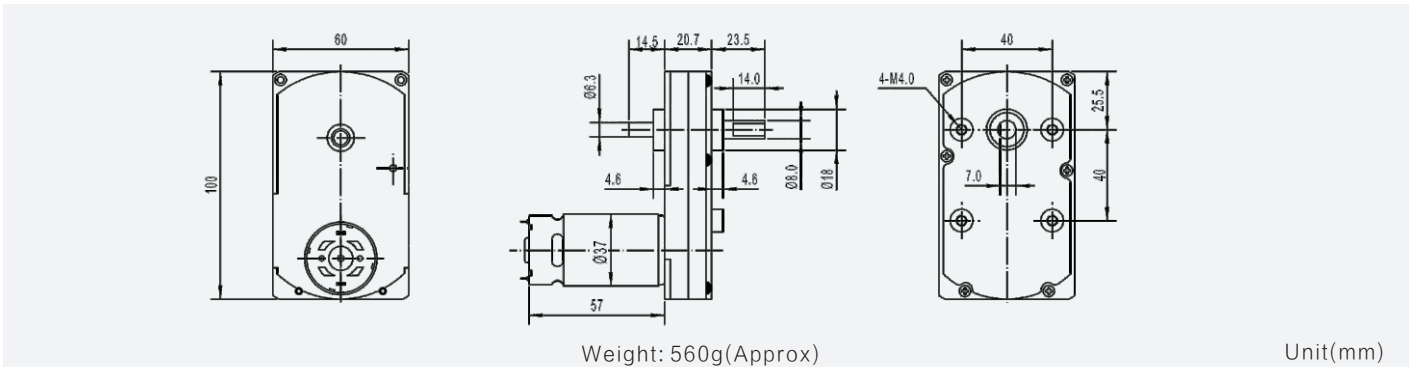
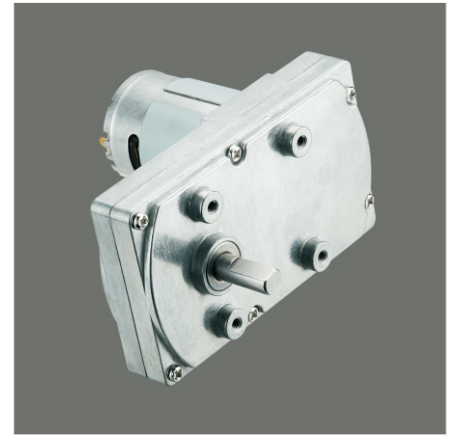


GM100F-555PM

100 × 60mm gearbox plus 555 permanent magnet DC motor

Module	0.6/0.8	
Rated torque (kg.cm)	20.0 kg.cm max	
Max momentary tolerance torque (kg.cm)	40.0 kg.cm max	
Reduction ratio	1/60、1/110	1/200、1/365
Number of gear stages	3	4
Gearbox length L (mm)	20.7	



Gear Motor Technical Data

		60	110	200	365					
12.0V	Reduction ratio	60	110	200	365					
	No-load speed(rpm)	80	45	25	14					
	Rated speed(rpm)	70	40	22	12					
	Rated torque(kg.cm)	8	15	24	44					
24.0V	No-load speed(rpm)	65	35	20	11					
	Rated speed(rpm)	50	29	16	8					
	Rated torque(kg.cm)	8	15	24	44					

Motor Technical Data

Motor model	Rated voltage	No-load		Rated			Stall		
		Speed	Current	Speed	Torque	Current	Power	Torque	Current
	VDC	r/min	mA	r/min	g.cm	mA	W	g.cm	A
TRS-555PM-1250	12.0	5000	250	4300	200	1400	8.8	1430	8.5
TRS-555PM-2440	24.0	4000	150	3200	200	700	6.6	1000	3.5

