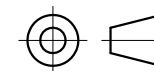


SPECIFICATION	VALUE
RATED VOLTAGE(V)	24
NO LOAD CURRENT(mA)	80
NO LOAD SPEED w/ GEARBOX(RPM)	421
RATED LOAD TORQUE w/ GEARBOX(kg.cm)	0.57
RATED CURRENT(mA)	190
RATED LOAD SPEED w/ GEARBOX(RPM)	334
RATED POWER(W)	2.45
NO LOAD SPEED w/o GEARBOX(RPM)	5800
RATED LOAD TORQUE w/o GEARBOX(g.cm)	52
RATED LOAD SPEED w/o GEARBOX(RPM)	4600
RATIO	13.7
MAX.PERMISSIBLE TORQUE(kg.cm)	20
MAX. PERMISSIBLE AXIAL LOAD(N)	≤10
MAX. PERMISSIBLE RADIAL LOAD(N)	≤20 (6mm FROM THE MOUNTING SURFACE)

NOTES:

- PLEASE CONDUCT THE WELDING WORK IN A SHORT TIME.(RECOMMENDATION:WITH THE SOLDERING IRON TIP AT A TEMPERATURE OF 340~400°C, WITHIN 2 SECONDS.
- PREVENT GEAR MOTOR FROM BEING SHOCKED OR DROPPING IN MOUNTING PROCESS.IT IS PROHIBITED TO STRIKE AND CRUSH DIRECTLY ON REDUCER OUTPUT SHAFT.
- INSTALL THE SCREWS AFTER FIRST CHECKING THE TAPS AND TAP DEPTH AGAINST THE DIMENSIONS ENTERED ON THE EXTERIOR DRAWING.
- IT IS NECESSARY TO BE CAREFUL THAT THE ADHESIVE DOES NOT SPREAD ALONG THE SHAFT AND FLOW INTO THE BEARING.
- DO NOT TURN A GEARED MOTOR BY ITS OUTPUT SHAFT WHEN, FOR EXAMPLE, ARRANGING ITS POSITION SO AS TO INSTALL IT.



	APVD		9.27.2022
	CHKD		
1:1	DRN		
SCALE	SIGNATURE		DATE

DC GEARBOX MOTOR

PA28-28245800-G14